



**India Meteorological Department  
(Ministry of Earth Sciences)**

**BULLETIN NO. : 01 (BOB/08/2022)**

**TIME OF ISSUE: 0830 HOURS IST**

**DATED: 11.09.2022**

**FROM: INDIA METEOROLOGICAL DEPARTMENT (FAX NO. 24643965/24699216/24623220)**

**TO: CONTROL ROOM, NDM, MINISTRY OF HOME AFFAIRS (FAX.NO. 23093750)  
CONTROL ROOM NDMA (FAX.NO. 26701729)  
CABINET SECRETARIAT (FAX.NO.23012284, 23018638)  
PS TO HON'BLE MINISTER FOR S & T AND EARTH SCIENCES (FAX NO.23316745)  
SECRETARY, MOES (FAX NO. 24629777)  
H.Q. (INTEGRATED DEFENCE STAFF AND CDS) (FAX NO. 23005137/23005147)  
DIRECTOR GENERAL, DOORDARSHAN (23385843)  
DIRECTOR GENERAL, AIR (23421105, 23421219)  
PIB MOES (FAX NO. 23389042)  
UNI (FAX NO. 23355841)  
D.G. NATIONAL DISASTER RESPONSE FORCE (NDRF) (FAX NO. 26105912, 2436 3260)  
DIRECTOR, PUNCTUALITY, INDIAN RAILWAYS (FAX NO. 23388503)  
CHIEF SECRETARY, ODISHA (FAX NO. 0674-2536660)  
CHIEF SECRETARY, ANDHRA PRADESH (FAX NO. 0863-2441029, 08645-246600)  
CHIEF SECRETARY, WEST BENGAL (FAX NO. 033-22144328)  
CHIEF SECRETARY, CHATTISGARH (FAX NO. 771-2221206)  
CHIEF SECRETARY, TAMIL NADU (FAX NO 044-25672304)  
CHIEF SECRETARY, PUDUCHERRY (FAX NO 0413-2334145)  
CHIEF SECRETARY, JHARKHAND (FAX NO. 651-2400255)  
CHIEF SECRETARY, GOVT. OF MADHYA PRADESH (FAX NO. 755-2441076)  
CHIEF SECRETARY, GOVT. OF MAHARASHTRA (FAX NO. 022- 22028594)  
CHIEF SECRETARY, GOVT. OF RAJASTHAN (FAX NO. 0141-2227114)  
CHIEF SECRETARY, GOVT. OF GUJARAT (FAX NO. 079-23250305)  
ADMINISTRATOR, ANDAMAN & NICOBAR ISLANDS (FAX NO. 03192- 232656)**

**Sub: Depression over south coastal Odisha and neighbourhood**

The Well Marked Low Pressure Area over Westcentral & adjoining Northwest Bay of Bengal off north Andhra Pradesh-south Odisha coasts moved west-northwestwards and concentrated into a Depression and lay centered at 0530 hrs IST of today, the 11th Sept 2022, over south coastal Odisha and neighbourhood near latitude 19.5°N and longitude 84.7°E, about 20 km northwest of Gopalpur.

It is likely to move west-northwestwards across south Odisha and south Chhattisgarh during next 24 hours and weaken gradually.

**Warnings:**

**(i) Rainfall (Warning Graphics enclosed)**

**11th September: Heavy to very heavy rainfall** at isolated places is very likely over Odisha, coastal Andhra Pradesh, Gangetic West Bengal, Chhattisgarh, Telangana and **heavy rainfall** at isolated places very likely over Vidarbha

**12th September: Heavy to very heavy rainfall** at isolated places is likely over Gangetic West Bengal and **heavy rainfall** at isolated places is likely over Odisha, Chhattisgarh, Telangana and Madhya Pradesh.

**(ii) Wind warning**

- Squally winds speed reaching 40-50 kmph gusting to 60 kmph are very likely to prevail over northwest & westcentral Bay of Bengal and along & off North Andhra Pradesh, Odisha and West Bengal coasts on 11<sup>th</sup> September, 2022.

**(iii) Sea condition**

- Sea condition will be rough to very rough over northwest & westcentral Bay of Bengal and along & off Andhra Pradesh, Odisha and West Bengal coasts on 11<sup>th</sup> September, 2022.

**(iv) Fishermen Warning (Warning graphics enclosed)**

- Fishermen are advised not to venture into northwest & westcentral Bay of Bengal and along & off Andhra Pradesh, Odisha and West Bengal coasts on 11<sup>th</sup> September, 2022.

The next bulletin will be issued at 1130 hrs IST of today, the 11th September,2022.

**(R.K Jenamani)**  
**Scientist-F,**  
**Cyclone Warning Division**

*Copy to: ACWC Kolkata/ ACWC Chennai/ CWC Bhubaneswarr//CWC Visakhapatnam/MC Amravati/ MC Bhopal*



## OBSERVED AND FORECAST TRACK OF DEPRESSION OVER SOUTH COASTAL ODISHA & NEIGHBOURHOOD BASED ON 0000 UTC OF 11th SEPTEMBER, 2022



DATE/TIME IN UTC

IST=UTC + 0530

L: LOW PRESSURE AREA

WML: WELL MARKED LOW PRESSURE AREA

D: DEPRESSION (17-27 KT)

DD: DEEP DEPRESSION (28-33 KT)

CS: CYCLONIC STORM (34-47 KT)

SCS: SEVERE CYCLONIC STORM (48-63KT)

VSCS: VERY SEVERE CYCLONIC STORM (64-89 KT)

ESCS: EXTREMELY SEVERE CYCLONIC STORM (90-119 KT)

SuCS: SUPER CYCLONIC STORM ( $\geq$  120 KT)

● LESS THAN 34 KT

⊙ 34-47 KT

⊙  $\geq$  48 KT

— OBSERVED TRACK

— FORECAST TRACK

▲ CONE OF UNCERTAINTY

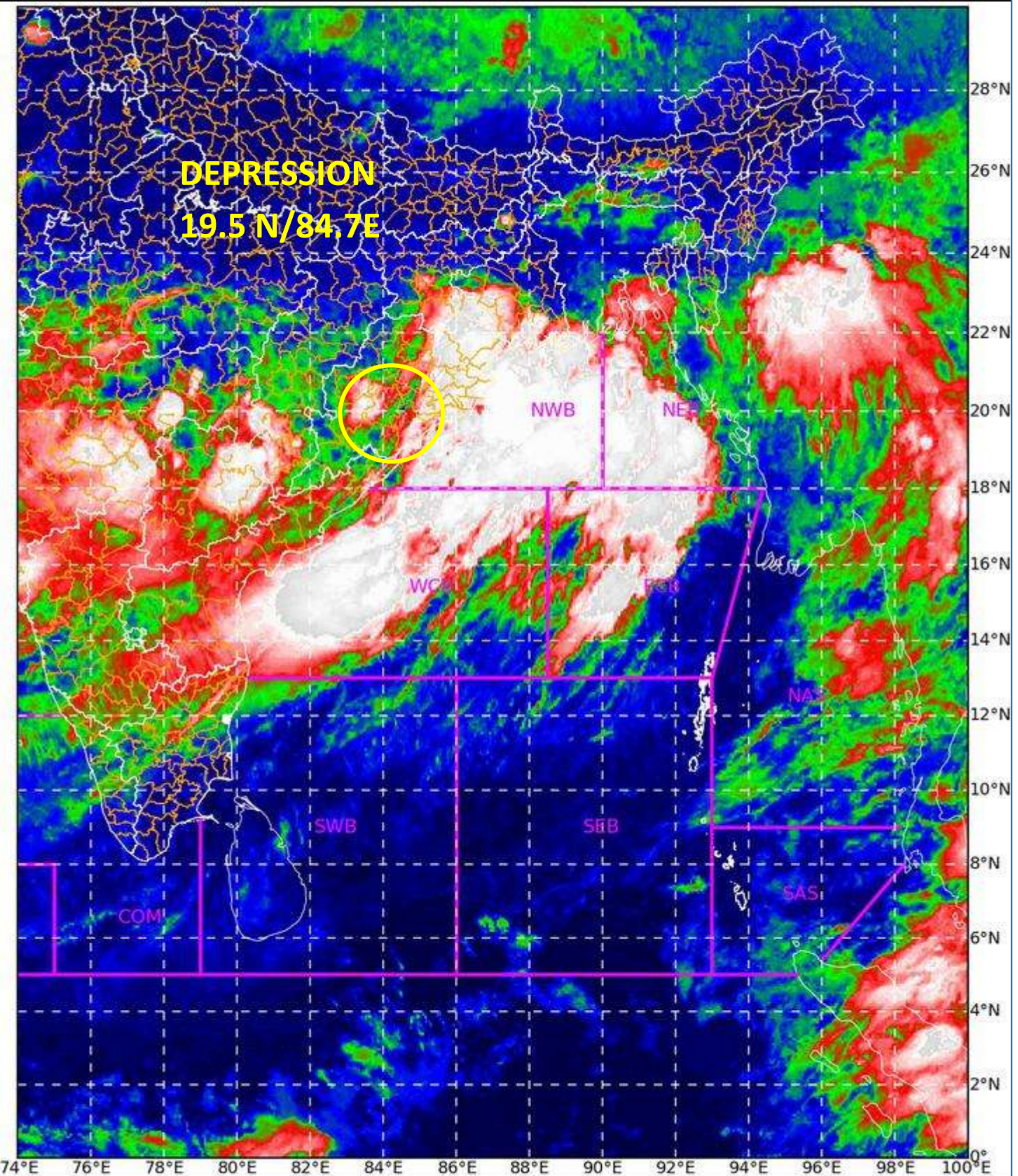
SAT : INSAT-3D IMG

11-09-2022/(0130 to 0156) GMT

IMG\_TIR1\_TEMP 10.8 um

11-09-2022/(0700 to 0726) IST

L1C Mercator



**DEPRESSION**  
**19.5 N/84.7 E**

NWB

NEB

WCB

SWB

SBB

COMI

SAS

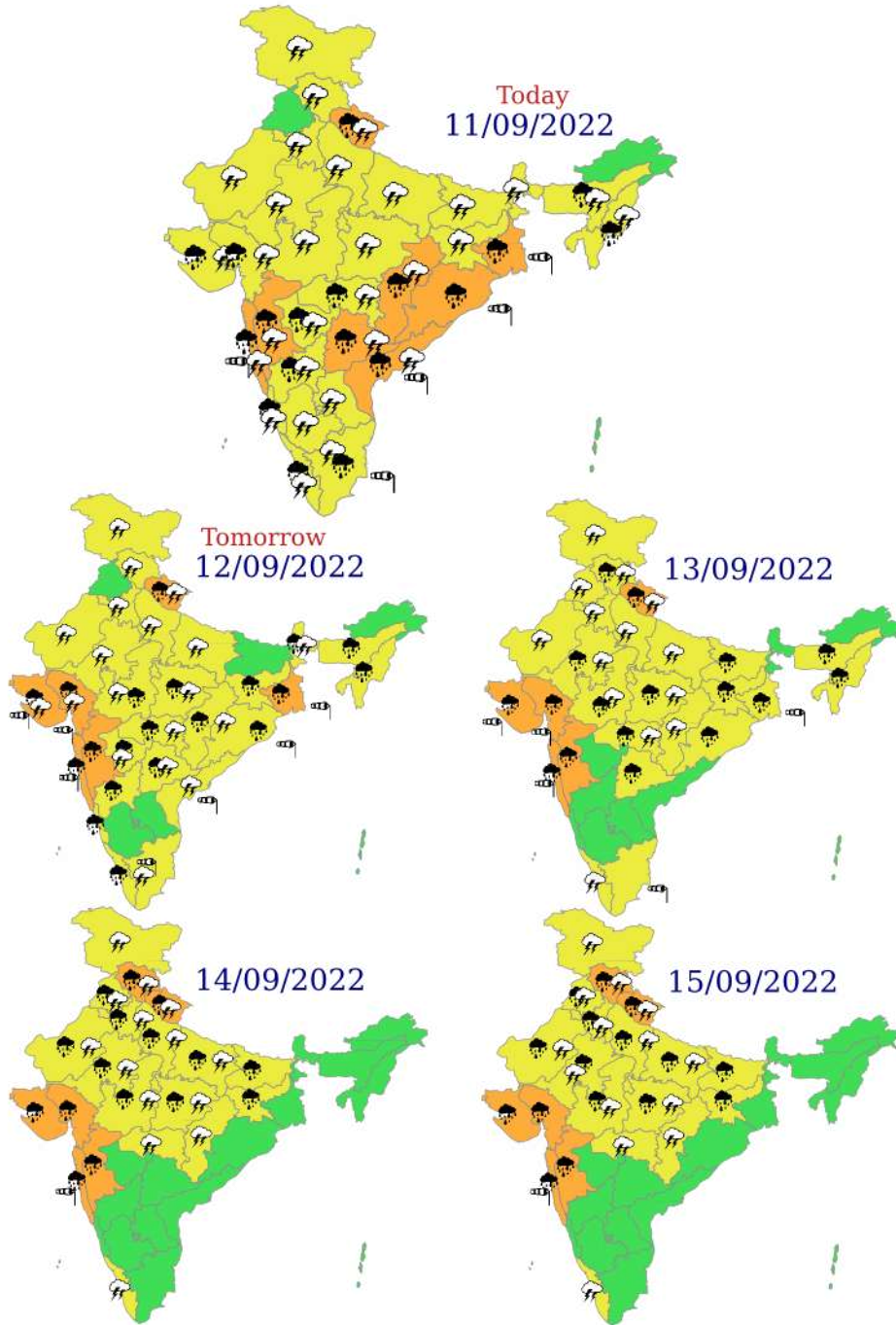
0 -20 -50

Celsius

IMD, DELHI

10 -10 -30 -70

# Weather Warning Graphics

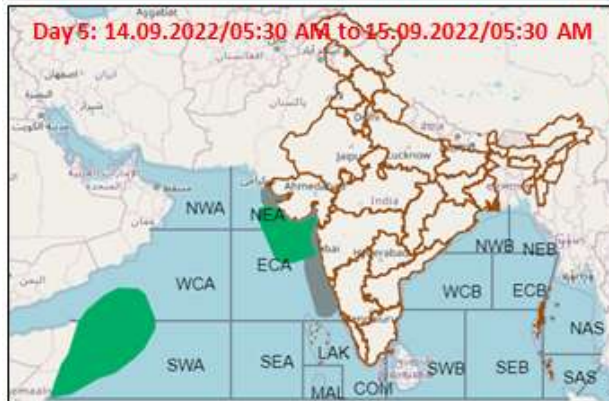
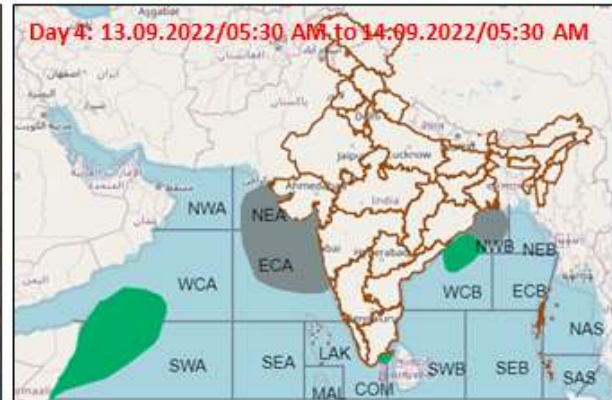
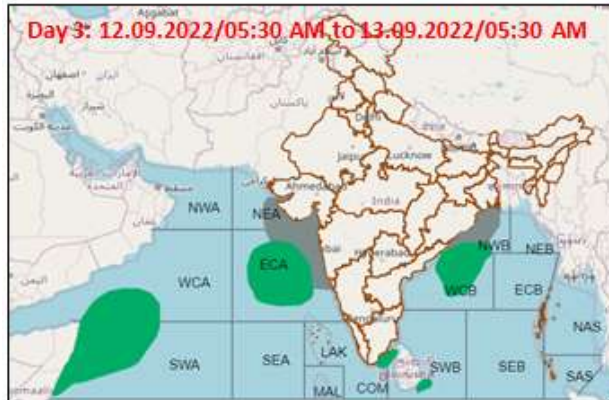
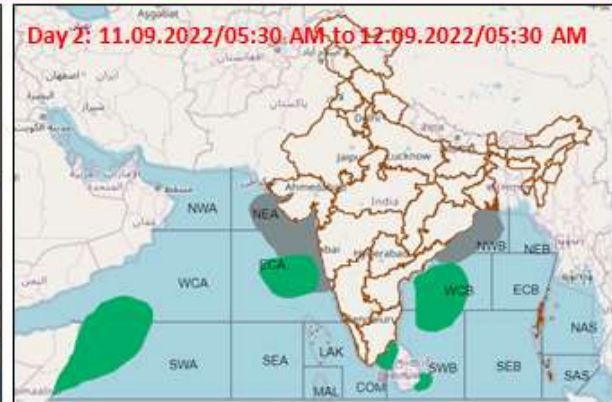
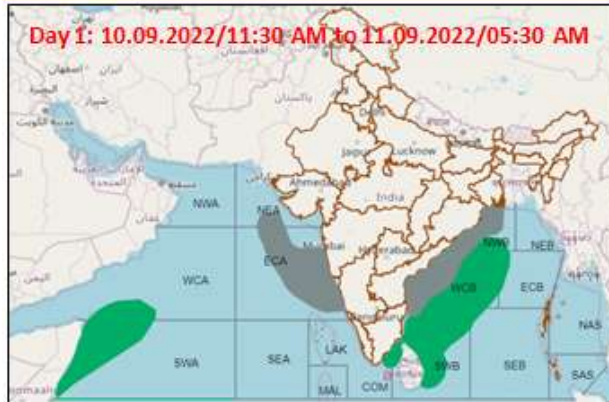


 Heavy Rain  
 Strong Winds

**WARNING**

WARNING (TAKE ACTION)
ALERT ( BE PREPARED)
WATCH (BE UPDATED)
NO WARNING ( NO ACTION)

## Fishermen warning graphics



Squally WX with wind speed 40-50 kmph gusting to 60 kmph

Squally wind speed 45-55 kmph gusting to 65 kmph

**Fishermen are advised not to venture into these marked areas.**